

Silver Spring CBD BiPPA – Planned Project Buildout & Status

19 February 2016

Background

In response to a request from Council Staff regarding the cost to build out the planned improvements in the Silver Spring BiPPA, the Division of Transportation Engineering has prepared this memorandum.

The BiPPA program (CIP #501532) includes planning, design, and construction funding for bicyclist and pedestrian improvements within Montgomery County's Bicycle and Pedestrian Priority Areas (BiPPAs). For the period from FY16 to FY22, the program is focused on five of the thirty BiPPA districts.

Specifically, the Capital Improvement Program set aside funding for the Silver Spring CBD, Grosvenor, Glenmont, Wheaton CBD, and Randolph/Veirs Mill. However, a decision was made to focus first on Silver Spring, which is where efforts are currently ongoing.

Funding for the BiPPA program was first allocated in FY15 for planning efforts, with construction funding becoming available in FY16. Several projects are currently underway using those funds, with planning for additional projects ongoing.

Silver Spring CBD

In FY16, the CIP included \$1 million for planning and construction. The Department anticipates expending all of that funding on several projects, including the Spring Street separated bike lanes and the first phase of the Silver Spring bike parking program.

The estimated cost to plan, design, and build the remaining projects in the Silver Spring BiPPA is approximately \$6.2 million.

Given the constraints in staff time and the lead time to design projects, the Division of Transportation Engineering would recommend implementation of these projects over several years. Under current funding levels, implementation is estimated to take at least 6 additional years.

However, with additional funding in place, we estimate the buildout could be completed in FY20.

The recommended projects, their estimated costs, and the timeframe for construction is shown in the table below.

	TOTALS	PDS	LAND	SIU	CONST
FY 17	\$1,723,333	\$423,333	\$0	\$100,000	\$1,200,000
Silver Spring Bike Parking Phase II	\$35,000	\$5,000	\$0	\$0	\$30,000
Cameron St bike lanes (Spring-Second)	\$860,000	\$210,000	\$0	\$50,000	\$600,000
Second Ave Cycletrack (Spring-Colesville)	\$725,000	\$175,000	\$0	\$50,000	\$500,000
Silver Spring Bike Wayfinding Phase I	\$40,000	\$20,000	\$0	\$0	\$20,000
Silver Spring APS/CPS upgrades (1/3rd)	\$45,000	\$11,667	\$0	\$0	\$33,333
Silver Spring curb ramps/driveways (1/3rd)	\$18,333	\$1,667	\$0	\$0	\$16,667

	TOTALS	PDS	LAND	SIU	CONST
FY 18	\$1,719,433	\$413,433	\$0	\$150,000	\$1,156,000
Fenton Street Extended Cycletrack	\$89,100	\$23,100	\$0	\$0	\$66,000
Fenton St Cycletrack (Cameron-Wayne)	\$758,750	\$183,750	\$0	\$50,000	\$525,000
Wayne Ave Cycletrack (Georgia-Fenton)	\$441,500	\$101,500	\$0	\$50,000	\$290,000
Dixon Avenue Cycletrack (Wayne-Ripley)	\$326,750	\$71,750	\$0	\$50,000	\$205,000
Silver Spring Bike Wayfinding Phase II	\$40,000	\$20,000	\$0	\$0	\$20,000
Silver Spring APS/CPS upgrades (1/3rd)	\$45,000	\$11,667	\$0	\$0	\$33,333
Silver Spring curb ramps/driveways (1/3rd)	\$18,333	\$1,667	\$0	\$0	\$16,667
Rectangular Rapid Flash Beacon Pilot	\$54,000	\$14,000	\$0	\$0	\$40,000

	TOTALS	PDS	LAND	SIU	CONST
FY 19	\$1,563,233	\$389,233	\$0	\$50,000	\$1,124,000
Fenton Street Cycletrack (Wayne-King)	\$1,499,900	\$375,900	\$0	\$50,000	\$1,074,000
Silver Spring APS/CPS upgrades (1/3rd)	\$45,000	\$11,667	\$0	\$0	\$33,333
Silver Spring curb ramps/driveways (1/3rd)	\$18,333	\$1,667	\$0	\$0	\$16,667

	TOTALS	PDS	LAND	SIU	CONST
FY 20	\$1,234,000	\$294,000	\$0	\$100,000	\$840,000
13th Street Cycletrack (Eastern-Georgia)	\$455,000	\$105,000	\$0	\$50,000	\$300,000
Burlington Ave Cycletrack (Georgia-Fenton)	\$367,250	\$82,250	\$0	\$50,000	\$235,000
Blair Mill Road bike lanes	\$411,750	\$106,750	\$0	\$0	\$305,000

These improvements, in conjunction with projects completed by other agencies and under other CIP projects, will help to build a robust bicycle and pedestrian network in the Silver Spring CBD, and will help link the urban district to surrounding neighborhoods and regional transportation corridors.

Notable projects in Silver Spring which are not funded through the BiPPA program include:

- Wayne Avenue Cycletrack (Georgia Avenue to Colesville Road), to be constructed by the Division of Traffic Engineering and Operations.
- Metropolitan Branch Trail (Montgomery College to Silver Spring Metro), to be constructed under CIP #501110.
- Capital Crescent Trail (Bethesda Metro to Silver Spring Metro), to be constructed as part of the Purple Line.
- Silver Spring Green Trail (Fenton Street to Sligo Creek Trail), to be constructed as part of the Purple Line.

See the exhibits at the end of the document for the projected build out of the network over each fiscal year, assuming the increased funding shown in the tables above.

FY 16

 (by BiPPA this FY)

 (by others this FY)

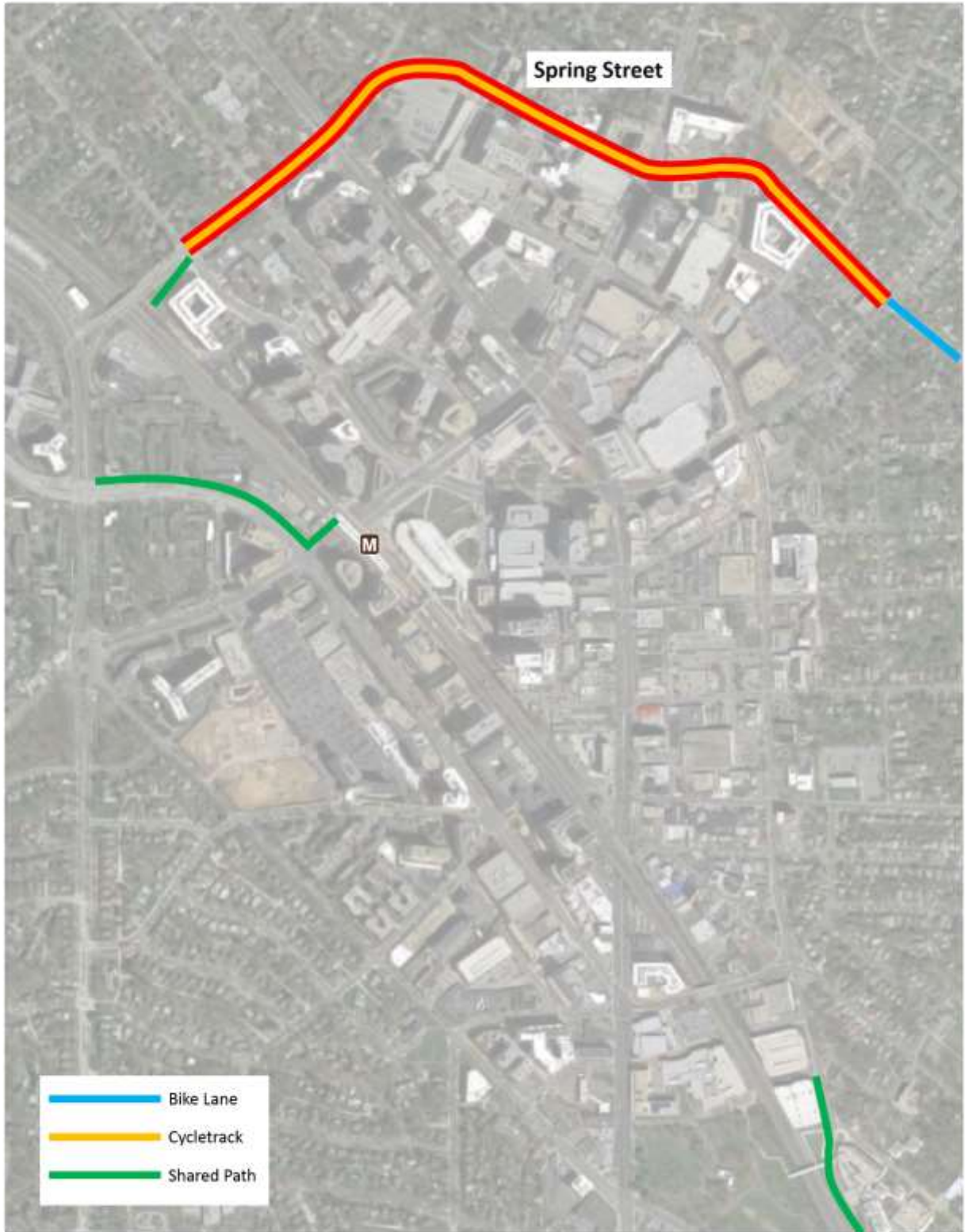


Figure 1: Silver Spring BiPPA projects: FY16

FY 17

 (by BiPPA this FY)

 (by others this FY)



Figure 2: Silver Spring BiPPA projects: FY17

FY 18

 (by BiPPA this FY)

 (by others this FY)

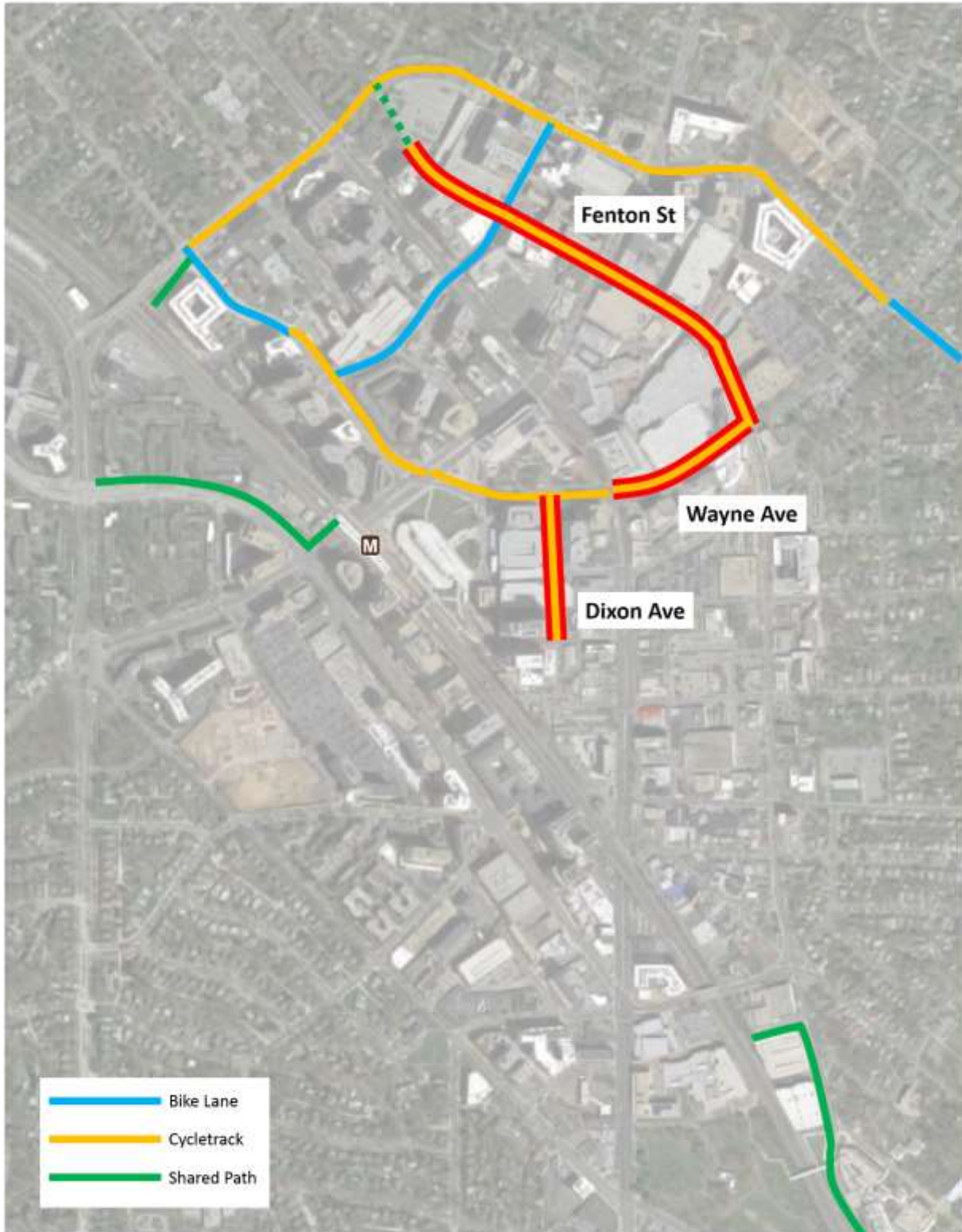


Figure 3: Silver Spring BiPPA projects: FY18

FY 19

 (by BiPPA this FY)

 (by others this FY)

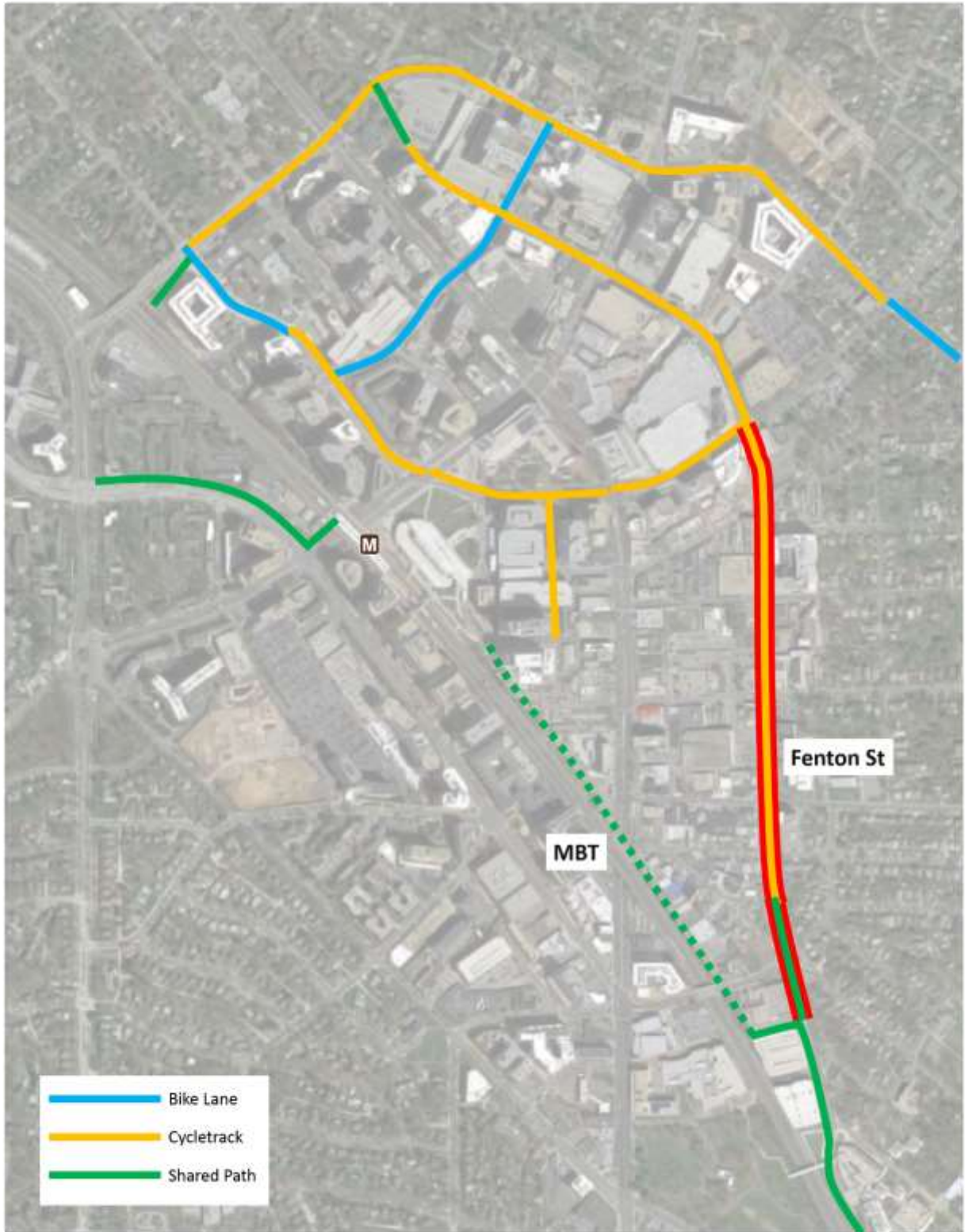


Figure 4: Silver Spring BiPPA projects: FY19

FY 20

 (by BiPPA this FY)

 (by others this FY)



Figure 5: Silver Spring BiPPA projects: FY20

Network

 (by BiPPA this FY)

 (by others this FY)

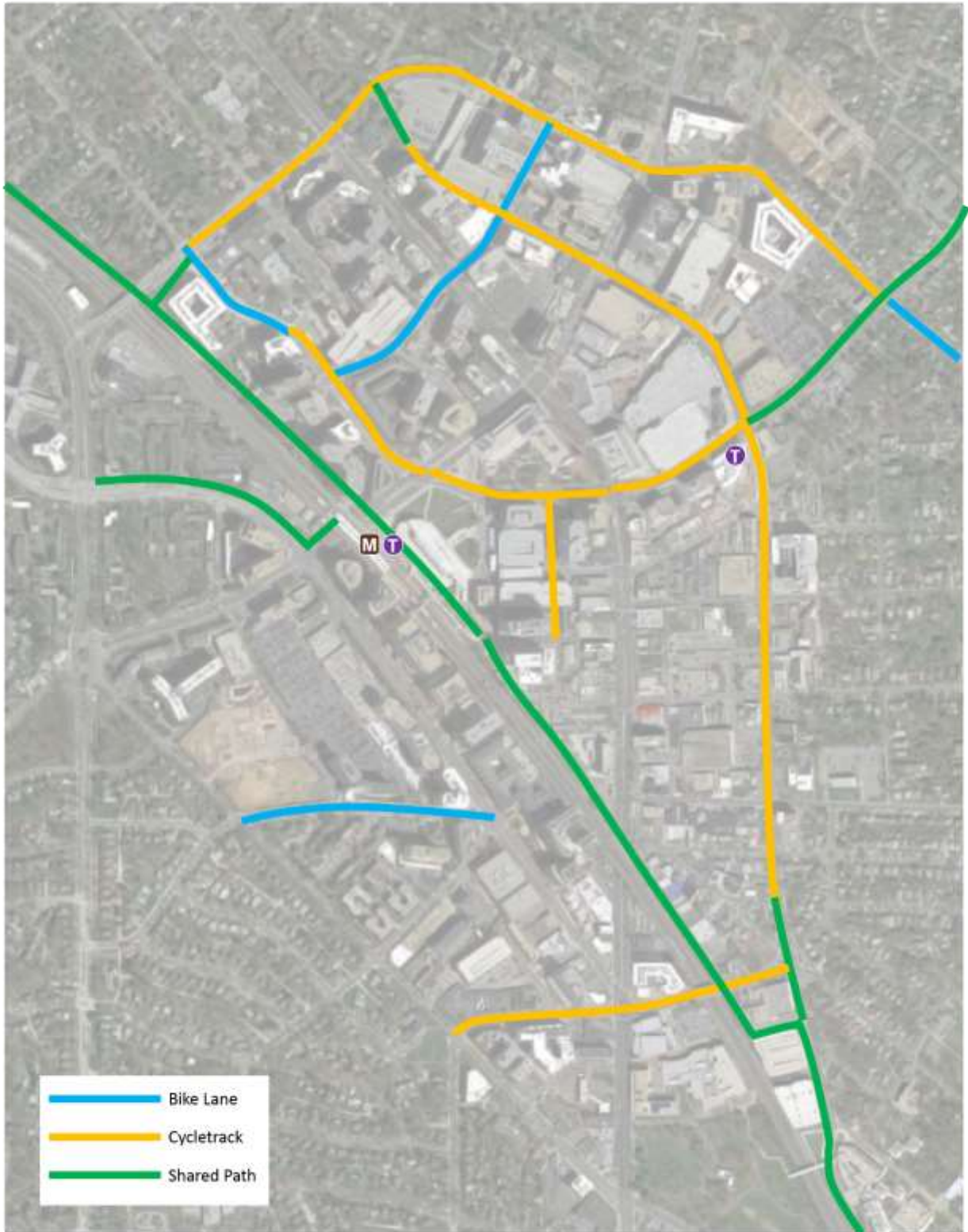


Figure 6: Silver Spring BiPPA projects: Full network